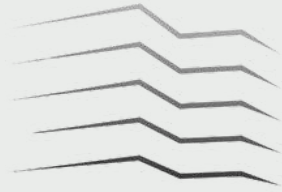




platinum  
TOWER



# Welcome

Tucked in the vibrant heart of **Cape Point** offers a lifestyle defined by its contemporary elegance and serene location. Here, every day begins with picturesque views of Atlantic Ocean, and every moment is an opportunity for peace and rejuvenation. In this charming location of a city designed for the future, Platinum Tower is not just a place to live—it is a place to love.



Apartment Type  
Studios,  
2 & 3 Bedrooms



Apartment Size  
62 - 201 m<sup>2</sup>

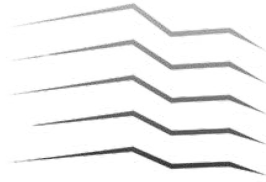


Commercial Space  
550m<sup>2</sup>



Payment Plan  
36 Months





# Mastering the art of living by the Ocean

Luxury intertwines seamlessly with the serenity of waterfront living, offering a sanctuary where opulence meets tranquility. Embrace the gentle lull of waves and breathtaking views, enveloped in an ambiance of refined indulgence. Here, every moment is a symphony of luxury, echoing the serene rhythm of waterfront life



11 storey  
Tower



Prime  
Location



Panoramic  
Ocean Views



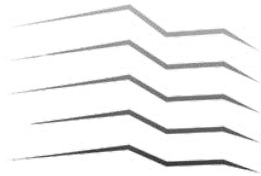


# Live Elevated Live Platinum

Gambia's hidden gem **Cape Point**, is a prestigious neighborhood housing the city's affluent residents. **Platinum Tower's** location offers easy access to top attractions, business hubs, and entertainment options. Live life to the fullest, immerse yourself in the vibrant culture, savor the local and continental cuisine, and explore the serenity of water front living.



  
platinum  
TOWER



# Commercial Spaces

From chic fashion houses to artisanal home decor, our retail spaces cater to the most discerning tastes. Stroll through upscale stores, each with distinctive charm. Our retail spaces combine the allure of renowned brands with a social atmosphere, creating a lifestyle hub for residents. From exclusive cafes to curated storefronts, experience the extraordinary without leaving home.









platinum  
Super Market



# The Guide to Elevate Your Everyday Living

Our commitment to excellence shines through every detail, ensuring a living experience that is nothing short of extraordinary. Join us in a world where every day feels like a celebration of the finer things in life.



Reception



Underground  
Parking



Back Up  
Generator



Property Management  
Services



Elevators



Gymnasium



24 x 7 Security



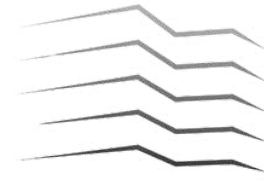
CCTV Surveillance





platinum





# Location

A prime location with  
unmatched convenience

Strategically located in **CAPE POINT** to ensure easy access to the city's prominent landmarks and a walking distance from the ocean.

Whether it's retail therapy, an early flight, a business meeting, a night out in town, or a leisurely stroll, everything you desire is within reach.





# platinum TOWER



Sunbeach Hotel & Resort

Cape Point

Cape Point Beach

British High Commissioner Residence

United Nations Development Program

EU Ambassador Residence

Ocean Bay Hotel & Spa

Calypso Bar & Restaurant

National Botanical Gardens

Bakau Craft Market

Right Choice Supermarket

Bojang River Lodge

African Village

Mega Bank

Tropic Garden

House of Flavour

Trust Bank

Bakau Police Station

International BM

SEA

SEA

Majula Boutique

Banjul American International School

British Embassy Banjul

St Paul's Church

MRC Unit The Gambia at LSHTM

Bakau New Town

Kachikally Crocodile Pool

Cape Creek

Leybato Beach

The Shack Fajara

Envy Night Club

Marina International School

GT Bank

Western Union Bank

Garba Jahumpa Road

Ndemban Health Center

The Gambia Standards Bureau

Independence Stadium

Fajara Club

Kairaba Ave

Standard Chartered Bank

Baha'i National Center

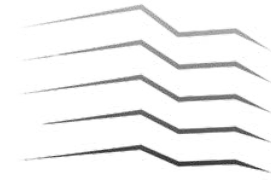
Social Security

GNOC

Traffic Light Junctions

National Audit (NAO)





# Residential Apartments

A seasoned investor's dream

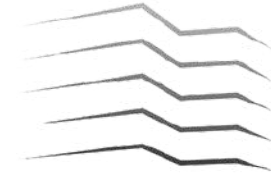
Capitalize on the thriving mid and long-term rental market for impressive returns on your investment.

**Studios**  
18 units

**2 Bed**  
18 units

**3 Bed**  
18 units

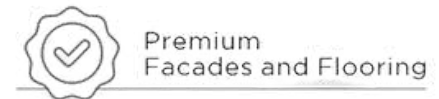
**Penthouse**  
2 units



# Views from Terraces

Discover elegance and tranquility by the ocean

The 11 Storey tower stands poised with unparalleled views of clear waters and captivating illuminations of the city.





APARTMENT TYPE 1C



APARTMENT TYPE 1B



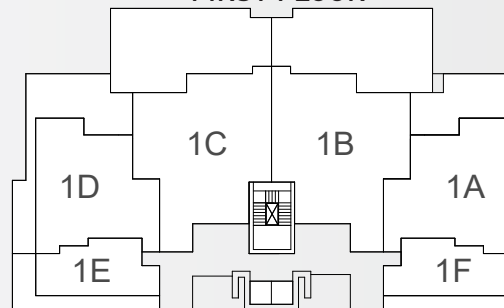
APARTMENT TYPE 1D



FIRST FLOOR



APARTMENT TYPE 1A





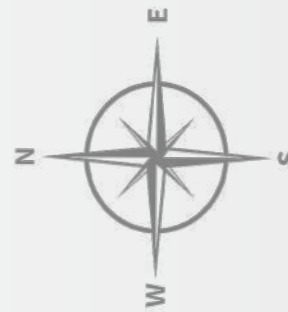
APARTMENT TYPE 2C



APARTMENT TYPE 2B



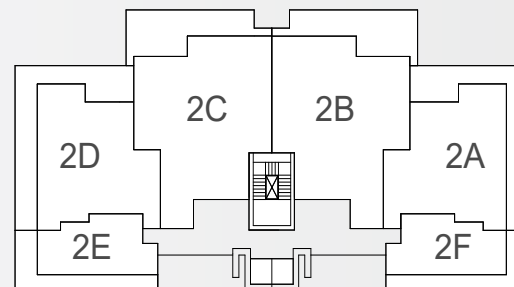
APARTMENT TYPE 2D



SECOND FLOOR



APARTMENT TYPE 2A





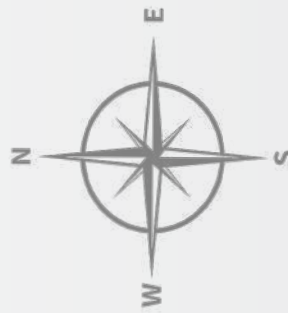
APARTMENT TYPE 3C



APARTMENT TYPE 3B



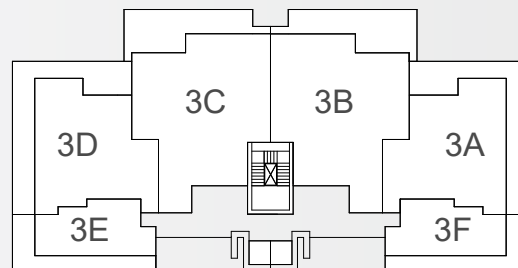
APARTMENT TYPE 3D



THIRD FLOOR



APARTMENT TYPE 3A





APARTMENT TYPE 4C



APARTMENT TYPE 4B



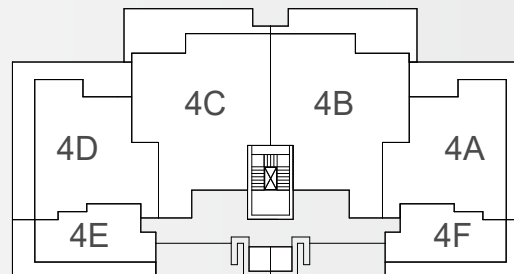
APARTMENT TYPE 4D



FOURTH FLOOR



APARTMENT TYPE 4A







APARTMENT TYPE 5C



APARTMENT TYPE 5B



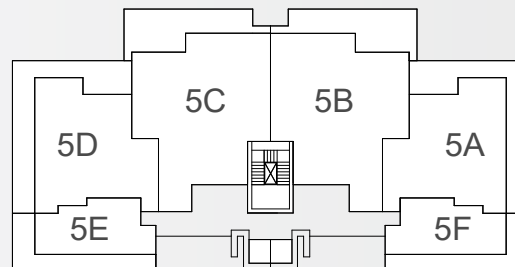
APARTMENT TYPE 5D



FIFTH FLOOR



APARTMENT TYPE 5A





APARTMENT TYPE 6C



APARTMENT TYPE 6B



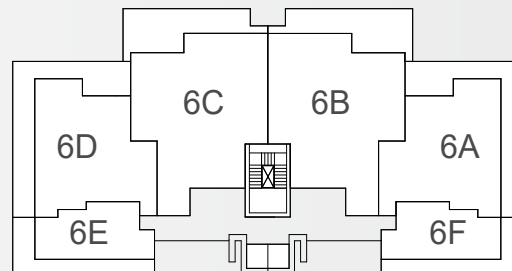
APARTMENT TYPE 6D



SIXTH FLOOR



APARTMENT TYPE 6A





APARTMENT TYPE 7C



APARTMENT TYPE 7B



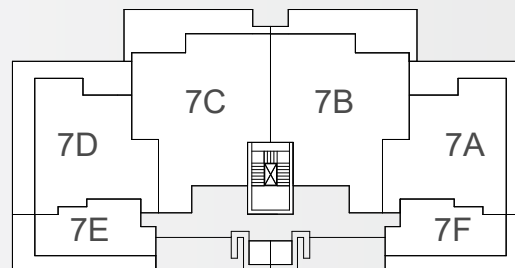
APARTMENT TYPE 7D



SEVENTH FLOOR



APARTMENT TYPE 7A





APARTMENT TYPE 8C



APARTMENT TYPE 8B



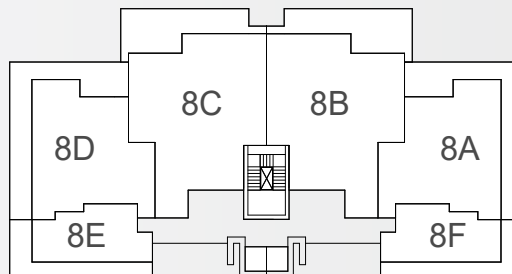
APARTMENT TYPE 8D



EIGHTH FLOOR



APARTMENT TYPE 8A





APARTMENT TYPE 9C



APARTMENT TYPE 9B



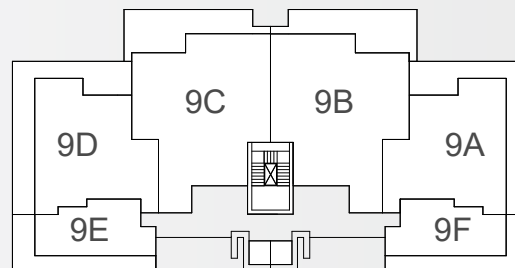
APARTMENT TYPE 9D



NINTH FLOOR



APARTMENT TYPE 9A





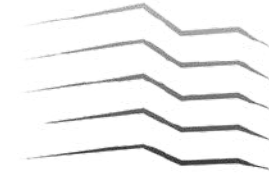
APARTMENT TYPE 10B



APARTMENT TYPE 10A







# Floor Plans

**Thoughtfully Designed for Comfort**

Explore the living spaces that  
can transform your everyday  
life into a masterpiece of  
comfort and style.

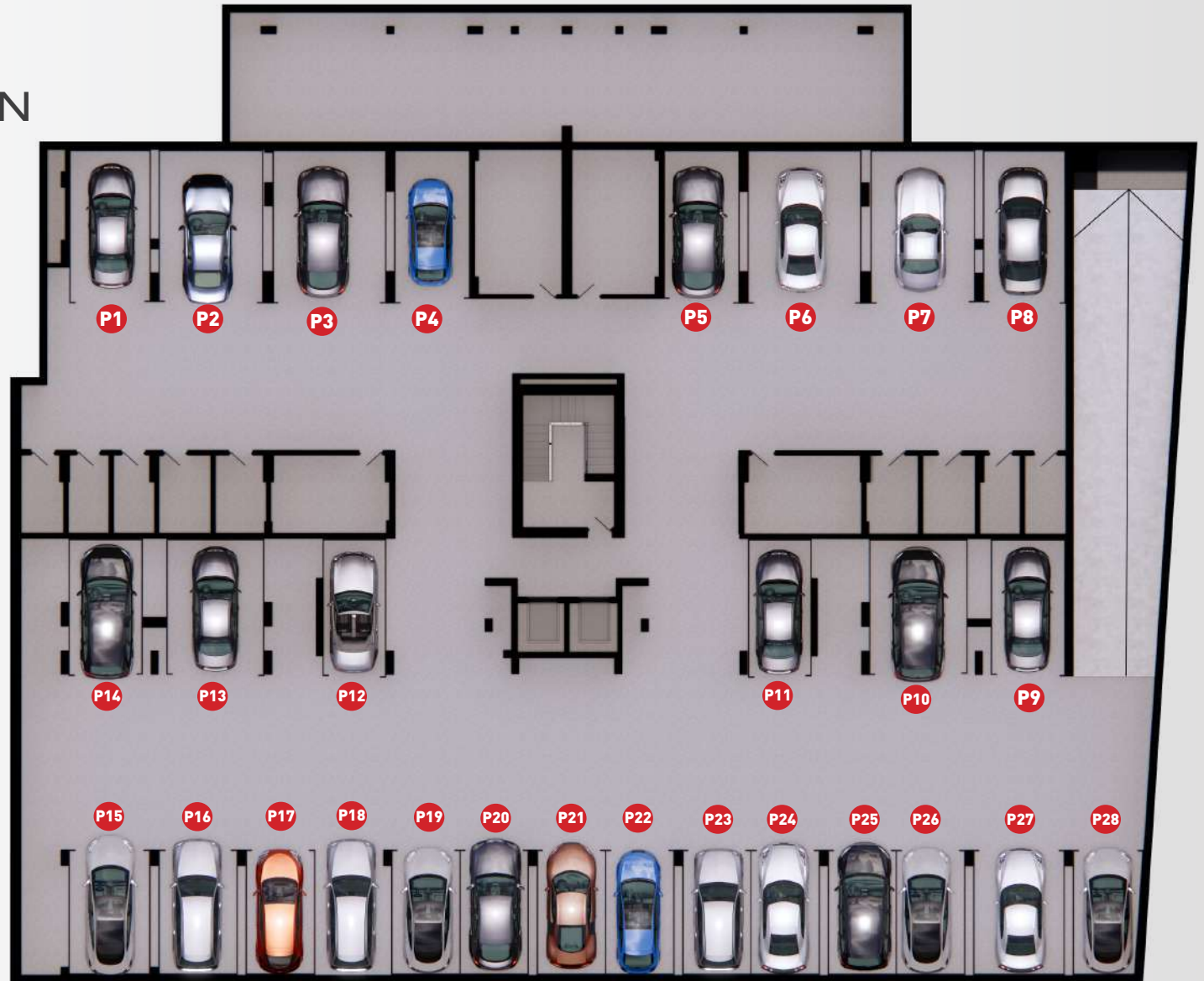






# BASEMENT FLOOR PLAN

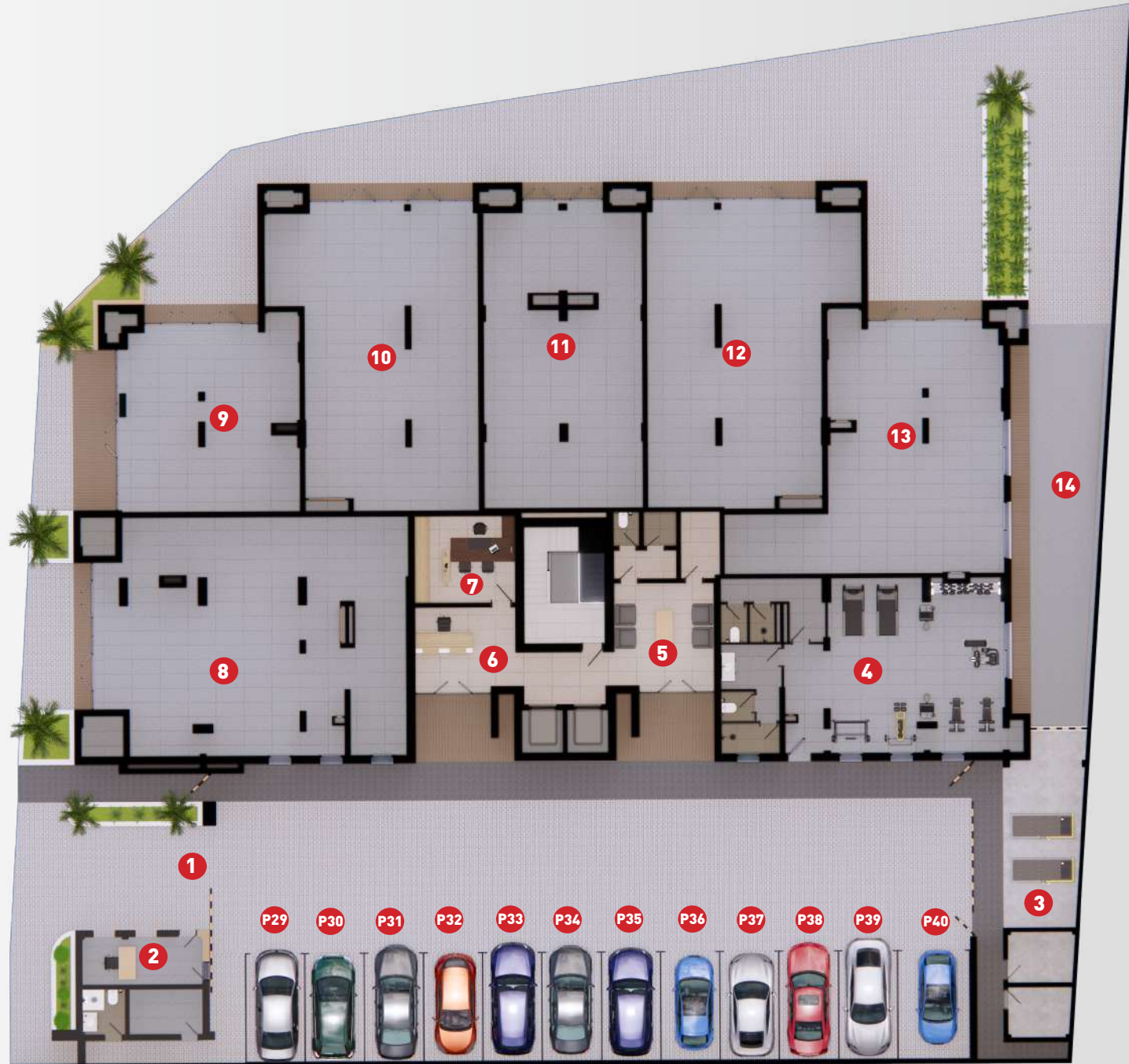
## 1. P1 TO P28 PARKING LOTS





## GROUND FLOOR PLAN

1. MAIN ENTRANCE GATE
2. SECURITY CABIN
3. GENERATOR AND ELECTRICAL AREA
4. GYMNASIUM
5. WAITING AREA
6. RECEPTION
7. OFFICE
8. COMMERCIAL SPACE-1
9. COMMERCIAL SPACE-2
10. COMMERCIAL SPACE-3
11. COMMERCIAL SPACE-4
12. COMMERCIAL SPACE-5
13. COMMERCIAL SPACE-6
14. BASEMENT RAMP ACCESS



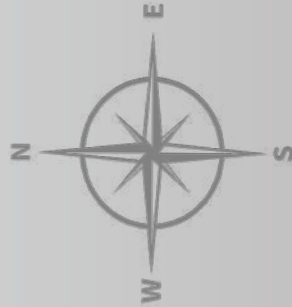


# 1ST FLOOR PLAN



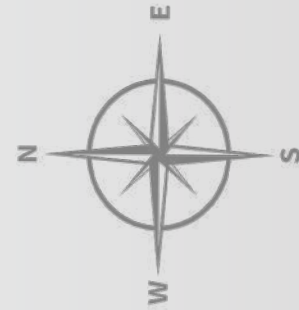


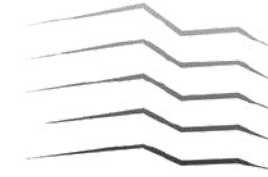
# 2nd to 9th FLOOR PLAN





# 10TH FLOOR PLAN





# Unit Plans & Interiors









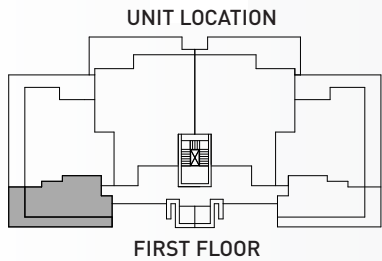
## STUDIO-APARTMENT NO-1E

### AREA DESCRIPTION

BUILT AREA	40.54 M <sup>2</sup>
TERRACE AREA	21.85 M <sup>2</sup>
TOTAL AREA	62.39 M <sup>2</sup>

### USEFUL AREAS

1 LIVING / DINNING / KITCHEN	16.3 M <sup>2</sup>
2 BATHROOM	4.1 M <sup>2</sup>
3 MASTER BEDROOM	12.3 M <sup>2</sup>
4 TERRACE	21.85 M <sup>2</sup>





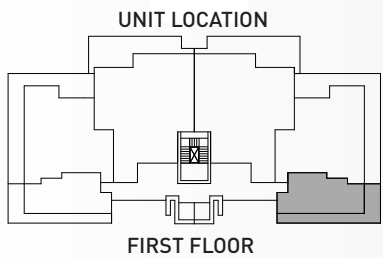
## STUDIO-APARTMENT NO-1F

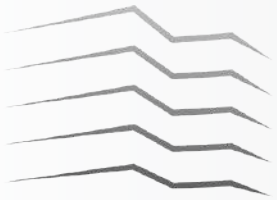
### AREA DESCRIPTION

BUILT AREA	40.54 M <sup>2</sup>
TERRACE AREA	17.25 M <sup>2</sup>
TOTAL AREA	57.79 M <sup>2</sup>

### USEFUL AREAS

1 LIVING / DINNING / KITCHEN	16.3 M <sup>2</sup>
2 BATHROOM	4.1 M <sup>2</sup>
3 MASTER BEDROOM	12.3 M <sup>2</sup>
4 TERRACE	17.25 M <sup>2</sup>





## 2 BED -APARTMENT NO-1A

### AREA DESCRIPTION

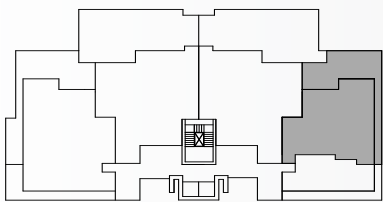
BUILT AREA	84.08M <sup>2</sup>
TERRACE AREA	43.73M <sup>2</sup>
TOTAL AREA	127.81 M <sup>2</sup>

### USEFUL AREAS

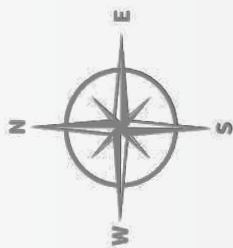
1 LIVING & DINNING	23.3 M <sup>2</sup>
2 KITCHEN	7.1 M <sup>2</sup>
3 BATHROOM	4.3 M <sup>2</sup>
4 BEDROOM-01	9.2 M <sup>2</sup>
5 BATHROOM	5.4M <sup>2</sup>
6 MASTER BEDROOM	14.9 M <sup>2</sup>
7 TERRACE	43.73 M <sup>2</sup>

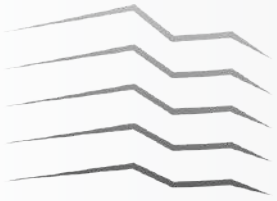


### UNIT LOCATION



FIRST FLOOR





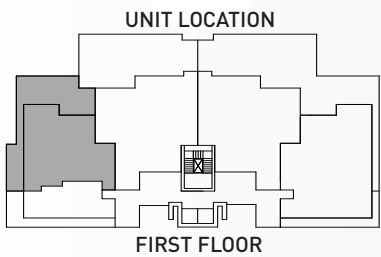
## 2 BED -APARTMENT NO-10

### AREA DESCRIPTION

BUILT AREA	84.08 M <sup>2</sup>
TERRACE AREA	49.56 M <sup>2</sup>
TOTAL AREA	133.64 M <sup>2</sup>

### USEFUL AREAS

1 LIVING & DINNING	23.3 M <sup>2</sup>
2 KITCHEN	7.1 M <sup>2</sup>
3 BATHROOM	4.3 M <sup>2</sup>
4 BEDROOM-01	9.2 M <sup>2</sup>
5 BATHROOM	5.4M <sup>2</sup>
6 MASTER BEDROOM	14.9 M <sup>2</sup>
7 TERRACE	49.56 M <sup>2</sup>





## 3 BED - APARTMENT NO-1B

### AREA DESCRIPTION

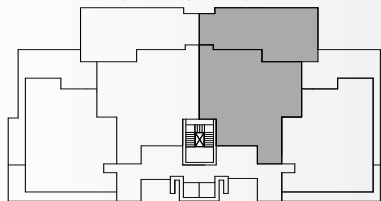
BUILT AREA	127.4 M <sup>2</sup>
TERRACE AREA	74.4 M <sup>2</sup>
TOTAL AREA	201.8 M <sup>2</sup>

### USEFUL AREAS

1 LIVING ROOM	18.1 M <sup>2</sup>
2 DINNING AREA	10.9 M <sup>2</sup>
3 KITCHEN	9.9 M <sup>2</sup>
4 PANTRY	4.0 M <sup>2</sup>
5 BEDROOM - 02	10.4 M <sup>2</sup>
6 BATHROOM	5.1 M <sup>2</sup>
7 BATHROOM	4.9 M <sup>2</sup>
8 MASTER BEDROOM	18.1 M <sup>2</sup>
9 BEDROOM - 01	11.4 M <sup>2</sup>
10 BATHROOM	2.9 M <sup>2</sup>
11 TERRACE	74.4 M <sup>2</sup>



### UNIT LOCATION



FIRST FLOOR





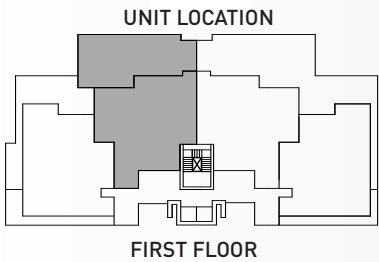
## 3 BED -APARTMENT NO-1C

### AREA DESCRIPTION

BUILT AREA	
TERRACE AREA	127.4 M <sup>2</sup>
TOTAL AREA	74.4 M <sup>2</sup>
	201.8 M <sup>2</sup>

### USEFUL AREAS

1 LIVING ROOM	18.1 M <sup>2</sup>
2 DINNING AREA	10.9M <sup>2</sup>
3 KITCHEN	9.9 M <sup>2</sup>
4 PANTRY	4.0 M <sup>2</sup>
5 BEDROOM - 02	10.4 M <sup>2</sup>
6 BATHROOM	5.1 M <sup>2</sup>
7 BATHROOM	4.9 M <sup>2</sup>
8 MASTER BEDROOM	18.1 M <sup>2</sup>
9 BEDROOM - 01	11.4 M <sup>2</sup>
10 BATHROOM	2.9 M <sup>2</sup>
11 TERRACE	74.4 M <sup>2</sup>











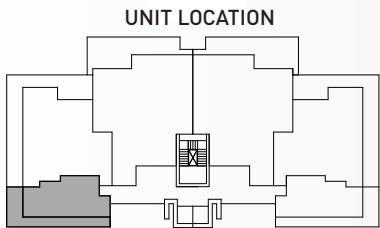
# STUDIO-APARTMENT NO-2E TO 9E

## AREA DESCRIPTION

BUILT AREA	40.54 M <sup>2</sup>
TERRACE AREA	21.28 M <sup>2</sup>
TOTAL AREA	61.82 M <sup>2</sup>

## USEFUL AREAS

1 LIVING / DINNING / KITCHEN	16.3 M <sup>2</sup>
2 BATHROOM	4.1 M <sup>2</sup>
3 MASTER BEDROOM	12.3 M <sup>2</sup>
4 TERRACE	21.28 M <sup>2</sup>



SECOND TO NINTH FLOOR





## STUDIO-APARTMENT NO-2F TO 9F

### AREA DESCRIPTION

BUILT AREA	40.54 M <sup>2</sup>
TERRACE AREA	21.28 M <sup>2</sup>
TOTAL AREA	61.82 M <sup>2</sup>

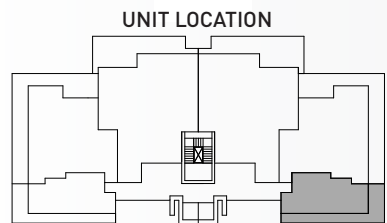
### USEFUL AREAS

1 LIVING / DINNING / KITCHEN	16.3 M <sup>2</sup>
2 BATHROOM	4.1 M <sup>2</sup>
3 MASTER BEDROOM	12.3 M <sup>2</sup>
4 TERRACE	21.28 M <sup>2</sup>



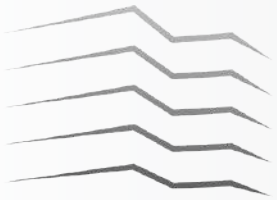
↓ CRAFT MARKET ↓

↓ CAPE CREEK ↓



SECOND TO NINTH FLOOR





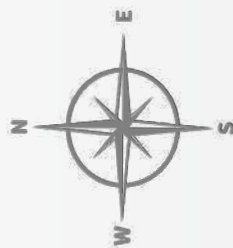
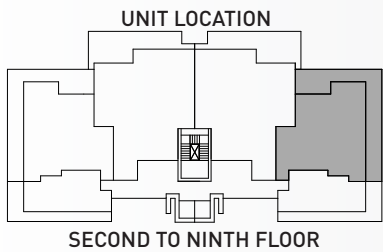
## 2BED APARTMENT TYPE-2A TO 9A

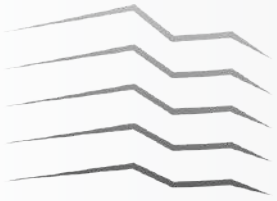
### AREA DESCRIPTION

BUILT AREA	84.08M <sup>2</sup>
TERRACE AREA	38.96M <sup>2</sup>
TOTAL AREA	123.04 M <sup>2</sup>

### USEFUL AREAS

1 LIVING & DINNING	23.3 M <sup>2</sup>
2 KITCHEN	7.1 M <sup>2</sup>
3 BATHROOM	4.3 M <sup>2</sup>
4 BEDROOM-01	9.2 M <sup>2</sup>
5 BATHROOM	5.4M <sup>2</sup>
6 MASTER BEDROOM	14.9 M <sup>2</sup>
7 TERRACE	38.96 M <sup>2</sup>





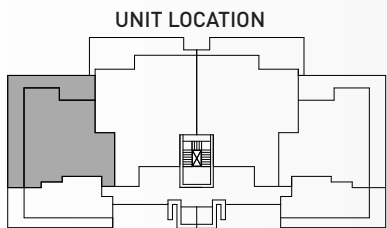
## 2BED APARTMENT TYPE-2D TO 9D

### AREA DESCRIPTION

BUILT AREA	84.08M <sup>2</sup>
TERRACE AREA	38.96M <sup>2</sup>
TOTAL AREA	123.04 M <sup>2</sup>

### USEFUL AREAS

1 LIVING & DINNING	23.3 M <sup>2</sup>
2 KITCHEN	7.1 M <sup>2</sup>
3 BATHROOM	4.3 M <sup>2</sup>
4 BEDROOM-01	9.2 M <sup>2</sup>
5 BATHROOM	5.4M <sup>2</sup>
6 MASTER BEDROOM	14.9 M <sup>2</sup>
7 TERRACE	38.96 M <sup>2</sup>



SECOND TO NINTH FLOOR





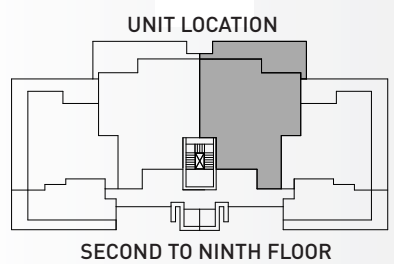
## 3BED APARTMENT TYPE-2B TO 9B

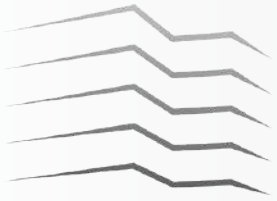
### AREA DESCRIPTION

BUILT AREA	127.4 M <sup>2</sup>
TERRACE AREA	29 M <sup>2</sup>
TOTAL AREA	156.4 M <sup>2</sup>

### USEFUL AREAS

1 LIVING ROOM	18.1 M <sup>2</sup>
2 DINNING AREA	10.9 M <sup>2</sup>
3 KITCHEN	9.9 M <sup>2</sup>
4 PANTRY	4.0 M <sup>2</sup>
5 BEDROOM - 02	10.4 M <sup>2</sup>
6 BATHROOM	5.1 M <sup>2</sup>
7 BATHROOM	4.9 M <sup>2</sup>
8 MASTER BEDROOM	18.1 M <sup>2</sup>
9 BEDROOM - 01	11.4 M <sup>2</sup>
10 BATHROOM	2.9 M <sup>2</sup>
11 TERRACE	29 M <sup>2</sup>





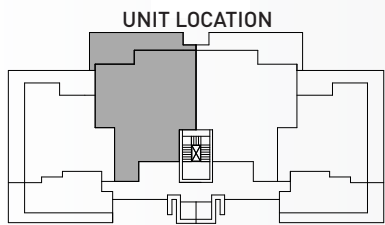
## 3BED APARTMENT TYPE-2C TO 9C

### AREA DESCRIPTION

BUILT AREA	127.4 M <sup>2</sup>
TERRACE AREA	29 M <sup>2</sup>
TOTAL AREA	156.4 M <sup>2</sup>

### USEFUL AREAS

1 LIVING ROOM	18.1 M <sup>2</sup>
2 DINNING AREA	10.9 M <sup>2</sup>
3 KITCHEN	9.9 M <sup>2</sup>
4 PANTRY	4.0 M <sup>2</sup>
5 BEDROOM - 02	10.4 M <sup>2</sup>
6 BEDROOM - 01	5.1 M <sup>2</sup>
7 BATHROOM	4.9 M <sup>2</sup>
8 BATHROOM	18.1 M <sup>2</sup>
9 BATHROOM	11.4 M <sup>2</sup>
10 MASTER BEDROOM	2.9 M <sup>2</sup>
11 TERRACE	29 M <sup>2</sup>



SECOND TO NINTH FLOOR











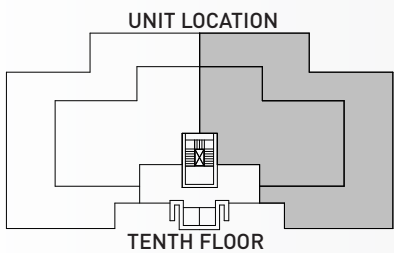
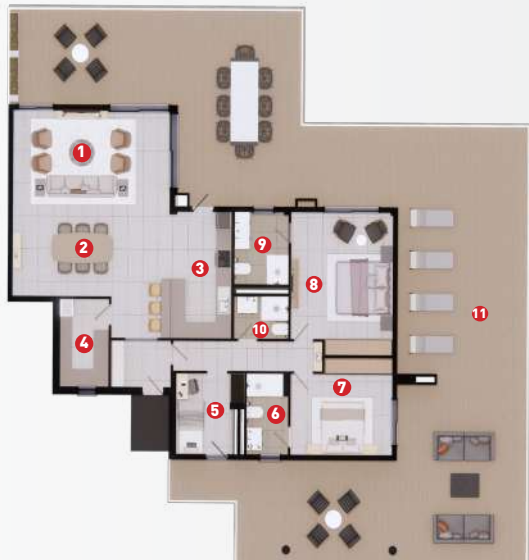
## PENTHOUSE TYPE-10A

### AREA DESCRIPTION

BUILT AREA	154 M <sup>2</sup>
TERRACE AREA	192.6 M <sup>2</sup>
TOTAL AREA	346.6 M <sup>2</sup>

### USEFUL AREAS

1 LIVING ROOM	24.9 M <sup>2</sup>
2 DINNING AREA	17.9M <sup>2</sup>
3 KITCHEN	14.5 M <sup>2</sup>
4 PANTRY	6.2 M <sup>2</sup>
5 BEDROOM - 02	6.9 M <sup>2</sup>
6 BATHROOM	4.5 M <sup>2</sup>
7 BEDROOM - 01	13.5 M <sup>2</sup>
8 MASTER BEDROOM	20.4 M <sup>2</sup>
9 BATHROOM	5.7 M <sup>2</sup>
10 BATHROOM	3.4 M <sup>2</sup>
11 TERRACE	192.6 M <sup>2</sup>





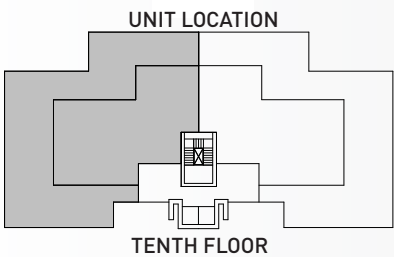
## PENTHOUSE TYPE-10B

### AREA DESCRIPTION

BUILT AREA	154 M <sup>2</sup>
TERRACE AREA	192.6 M <sup>2</sup>
TOTAL AREA	346.6 M <sup>2</sup>

### USEFUL AREAS

1 LIVING ROOM	24.9 M <sup>2</sup>
2 DINNING AREA	17.9 M <sup>2</sup>
3 KITCHEN	14.5 M <sup>2</sup>
4 PANTRY	6.2 M <sup>2</sup>
5 BEDROOM - 02	6.9 M <sup>2</sup>
6 BATHROOM	4.5 M <sup>2</sup>
7 BEDROOM - 01	13.5 M <sup>2</sup>
8 MASTER BEDROOM	20.4 M <sup>2</sup>
9 BATHROOM	5.7 M <sup>2</sup>
10 BATHROOM	3.4 M <sup>2</sup>
11 TERRACE	192.6 M <sup>2</sup>

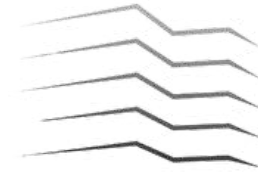




# Specifications

## Attention to Every Detail

- Fully Furnished Apartments
  - High speed elevators
  - Quality sanitary ware
- Fully Fitted Kitchen with branded appliances
  - Split Air Conditioners
- Premium doors featuring quality brushed ironmongery.
- Low energy LED spots in kitchen, bathrooms, bedroom and living room
  - CCTV & fire protection systems
  - Premium Facade and porcelain flooring
- High-speed Broadband cable with data point
  - Back up water and power systems
- Large Terraces with panoramic ocean views



# Why Invest in Platinum Tower?

Wealth Beyond Generations



ROI  
10-12% Annum



Price Appreciation  
10% per Annum



Annual Rental Yield  
10%